

GIGAMEDIA

SMART BUILDING SOLUTIONS

SOLUTIONS SPECIALISTS
FOR SMART BUILDINGS



www.gigamedia.net

www.kelliher.com

SOLUTIONS SPECIALISTS FOR SMART BUILDINGS

GIGAMEDIA
SMART BUILDING SOLUTIONS

GIGAMEDIA provides a full range of innovative solutions for installers, integrators and engineering departments, dedicated to the distribution of wiring systems, IT and telecommunications networks.

The solutions offered by GIGAMEDIA are key elements of smart building infrastructures with the following product ranges: Copper cabling systems, Fibre optic cabling systems, Enclosures, Active equipment, Public address systems & Videosurveillance.



COPPER
CABLING SYSTEM



FIBRE OPTIC
CABLING SYSTEM



ENCLOSURES



NETWORKING



VIDEOSURVEILLANCE
IP / AHD



ACCESS
CONTROL



PUBLIC
ADDRESS

GIGAMEDIA is a French brand created in 1996 by CONECTIS a **Rexel Group company**. GIGAMEDIA has become the leading distributor of wiring systems in France and has been rapidly establishing throughout Europe.

In Ireland, you can find GIGAMEDIA products in all 23 Kellihers and CT Electric branches. A network of wiring systems specialists provides the support for the branch network in helping to validate and design your data infrastructure.

By choosing GIGAMEDIA for the realization of your projects, you have the assurance of **innovative solutions** tailored to your needs.

GIGAMEDIA AROUND THE WORLD

EUROPE

Belgium
Finland
France
Spain
Italy
Ireland
Luxembourg
Netherlands
Portugal
Sweden
Switzerland

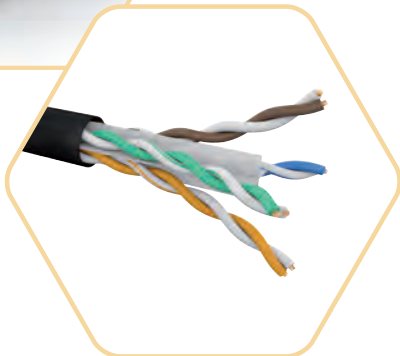


MORE THAN **1 000** BRANCHES
OVER THE WORLD

OCEANIA
Australia



COPPER SOLUTIONS



4 **CATEGORY 6A**
SOLUTIONS

8 **CATEGORY 6**
SOLUTIONS

10 **CATEGORY 5E**
SOLUTIONS

11 CABLING SYTEM
ACCESSORIES

12 CABLING SYTEM
BLISTERS & TOOLS



GIGAMEDIA's CAT6A solution is designed to meet and exceed the performance levels described in the published cabling standards ISO/IEC 11801 & ANSI/TIA 568.2-D. The performance headroom provided makes it a reliable and safe choice to support all Class EA applications including 10 Gigabit Ethernet and 90 W PoE.

All products are tested individually, and together in a channel application to ensure compatibility. The user is thus guaranteed to use CAT6A components compatible with the latest technologies, applications and standards.

FOR Cca, Dca CABLES



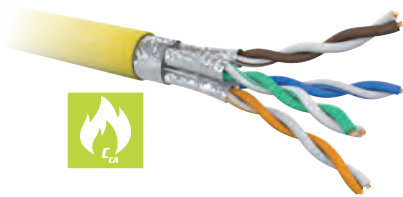
FOR ALL CABLES

- Standards: ISO/IEC 11801; EN 50173; ISO/IEC 24764; IEC 61156-5; ANSI/TIA-568.2-D
- Applications: IEEE 802.3: 10Base-T; 100Base-T ; 1000Base-T; 2.5GBase-T; 5GBase-T & 10GBase-T

CAT 6A F/FTP & U/FTP Cca

SOLID CABLES

- Frequency range: from 0 to 550 MHz
- Conductor bare copper wire, AWG23
- Aluminium/polyester foil tape shield on each pair
- Overall foil (F/FTP version)
- Yellow (RAL1021) LSHF-FR outer jacket
- Overall diameter: 7.6 mm
- Fire behaviour: Cca - s1a, d1, a1

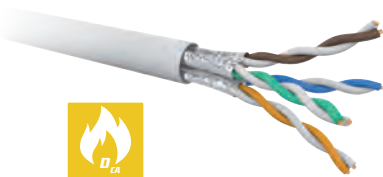


ITEM CODE	PART NUMBER	DESCRIPTION	EUROCLASS
-	GGM C6AFF4PFRT5	Cable 4 pairs CAT6A F/FTP LSZH-FR Yellow 500 m	Cca
0227172	GGM C6AUF4PFRT5	Cable 4 pairs CAT6A U/FTP LSZH-FR Yellow 500 m	Cca

CAT 6A F/FTP & U/FTP Dca

SOLID CABLES

- Frequency range: from 0 to 550 MHz
- Conductor bare copper wire, AWG23
- Aluminium/polyester foil tape shield on each pair
- Overall foil (F/FTP version)
- White (RAL9001) LSZH outer jacket
- Overall diameter: U/FTP : 7.4 mm ; F/FTP : 7 mm
- Fire behaviour: U/FTP: Dca - s2, d2, a2
F/FTP: Dca - s2, d1, a1

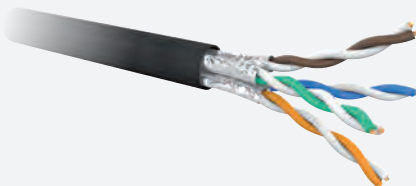


ITEM CODE	PART NUMBER	DESCRIPTION	EUROCLASS
-	GGM C6AFF4PZHT5	Cable 4 pairs CAT6A F/FTP LSZH White 500 m	Dca
0227135	GGM C6AF4PZHT5	Cable 4 pairs CAT6A U/FTP LSZH White 500 m	Dca
0227139	GGM C6AF4PZHT3	Cable 4 pairs CAT6A U/FTP LSZH White 305 m	Dca

CAT6A U/FTP

OUTDOOR CABLE

- Conductor bare copper wire, AWG23
- Aluminium/polyester foil tape shield on each pair
- Black (RAL9005) PE outer jacket
- Overall diameter : 7.5 mm



ITEM CODE	PART NUMBER	DESCRIPTION
0227178	GGM C6AUF4PPET3	Duct grade cable 4 pairs CAT6A U/FTP PE Black 305 m

Category 6A 10G Screened Jacks are designed for a high level of performance and meet all requirements. This uniquely designed connector feature a toolless termination method for quick and easy installation.

The jack contact design provides enhanced plug-to-jack connection integrity providing the highest level of reliability.

Jacks are fully shielded to optimize protection from EMI including Alien Crosstalk and have been specifically engineered with enhanced cable and connector performance designed to support the latest 10 Gb/s Ethernet requirements.

Like all our keystone jacks, they successfully pass all compliance tests, Cat6A component level and 4PPoE compliance approved by 3rd party testing.



TOOLLESS KEYSTONE JACKS

- ISO/IEC 11801 and EN 50173 compliant
- IEC 60603-7-51 certified (CAT6A component level)
- IEC 60512-99-002 certified (4PPoE)
- Gold plating: 50 μ
- Zinc-alloy fully shielded housing
- No specific tool required

ITEM CODE	PART NUMBER	DESCRIPTION
3853015	GGM PRJC6A10G	CAT6A STP slim toolless, shielded keystone jack
-	GGM PRJC6A10G24	CAT6A STP slim toolless, shielded keystone jack (box of 24 pcs)

ITEM CODE	PART NUMBER	DESCRIPTION
-	GGM PANC6AS24P	24-port patch panel 1U + 24x CAT6A RJ45 keystone jacks



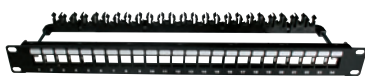
- ISO/IEC 11801 and EN 50173 compliant
- IEC 60603-7-51 certified (CAT6A component level)
- IEC 60512-99-002 certified (4PPoE)
- Compact keystone (28 mm depth)
- 8 wires insertion in one process
- 360° shield continuity
- Removable dust cover
- No specific tool required

ITEM CODE	PART NUMBER	DESCRIPTION
3853043	GGM NKJSC6ATL	CAT6A STP short body toolless, shielded keystone jack
-	GGM NKJSC6ATL24	CAT6A STP short body toolless, shielded keystone jack (box of 24 pcs)

ITEM CODE	PART NUMBER	DESCRIPTION
3853093	GGM NKJS24PC6A05	24-port patch panel 0.5U + 24x CAT6A RJ45 short body keystone jacks (ID #1/24)
-	GGM NKJS48PC6A05	24-port patch panel 0.5U + 24x CAT6A RJ45 short body keystone jacks (ID #25/48)

EMPTY PANEL

- Unit size: 1U
- All ports are identified
- Removable rear management bar with fixing clips included
- Black colour



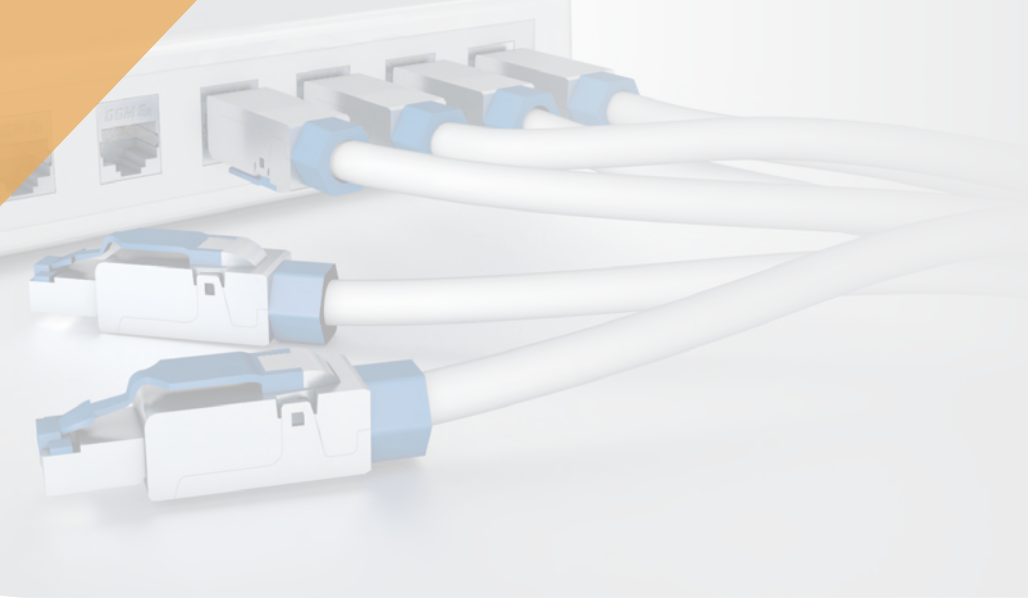
ITEM CODE	PART NUMBER	DESCRIPTION
3850901	GGM PANVC6A24BK	24-port empty metal patch panel 1U for CAT6A Keystone
3853047	GGM OBTURJ45K	Pack of 10 pcs Black RJ45 Keystone blanker

REMOVABLE SHUTTER

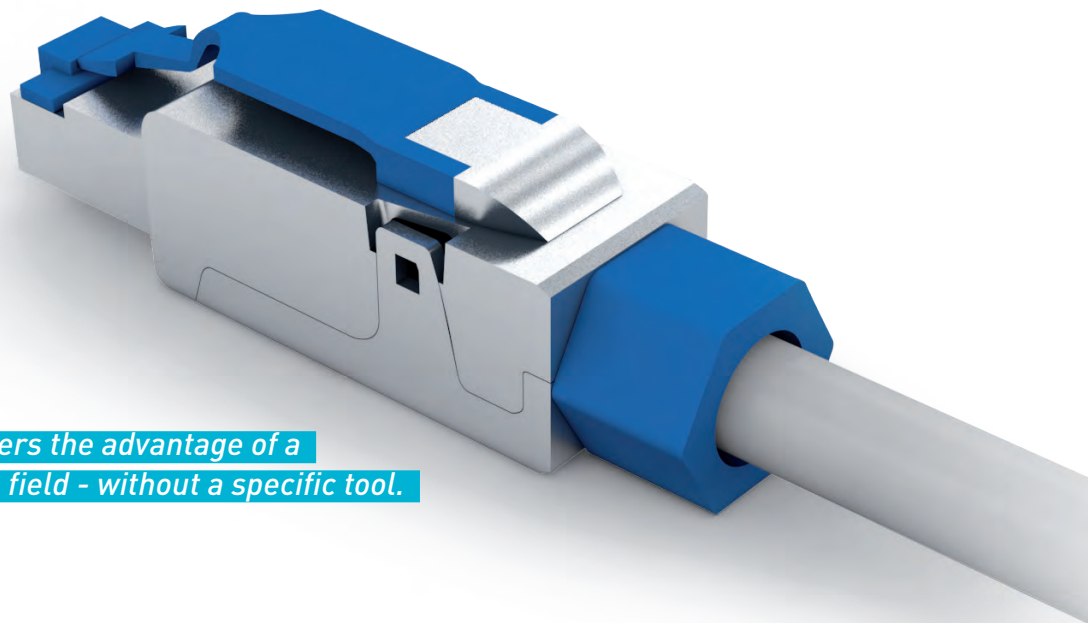
FOR NKJ (PACK OF 24)

Use our individual coloured shutter for convenient zone cabling





STP RJ45 PLUG **IP20 10G CLASS EA**



The GIGAMEDIA field plug offers the advantage of a fast and easy assembly in the field - without a specific tool.

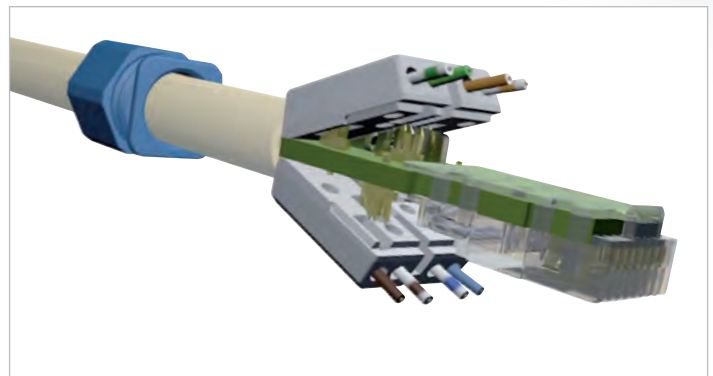
The solid zinc die cast housing ensures best EMC-characteristics.

The insulation displacement and a low contact resistance guarantee the safest bonding of the cable up to 8 mm thick connection cables with the cross sections AWG23/1 - AWG26/1.

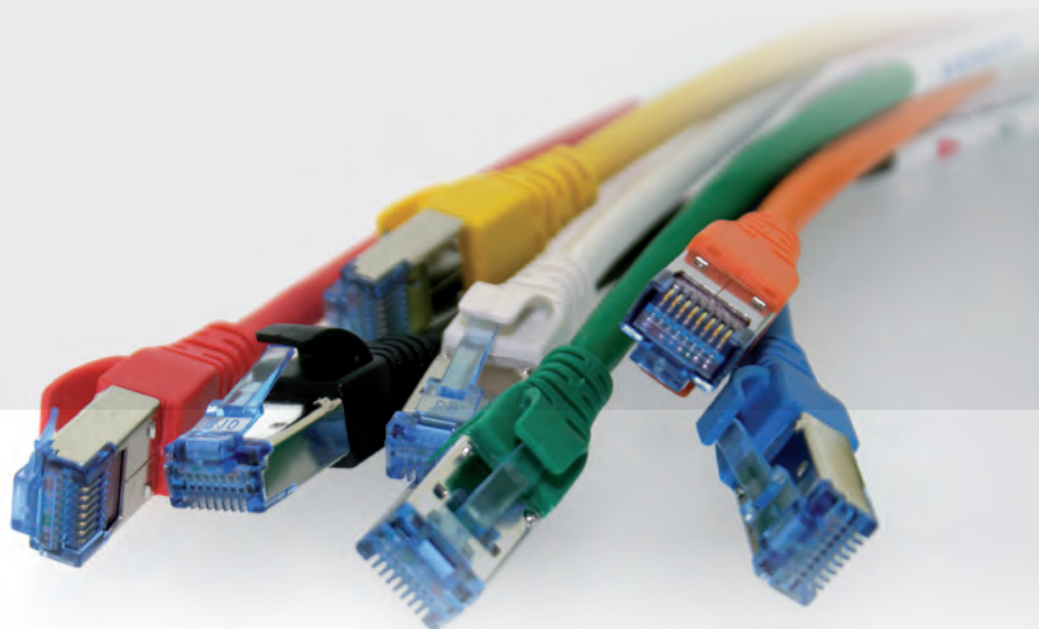
It is the perfect choice for MPTL applications.

FEATURES:

- Class EA, 10G/bits
- Die Cast housing, STP
- AWG23/1 - AWG26/1
- Max. cable OD acceptance: 8 mm
- Strain relief through locking nut



ITEM CODE	PART NUMBER	DESCRIPTION
3853045	GGM PLUGIT10G	10G class Ea field terminable plug AWG23/26
-	GGM PLUGIT10GL20	Pack of 20 pcs 10G class Ea field terminable plug AWG23/26



CATEGORY 6A PATCH CORDS

All GIGAMEDIA Category 6A patch cords use a short body blue plug (50 µ). The plug optimises the performance by ensuring the pair untwist is reduced. GIGAMEDIA patch cords also make the use of a slim, snag less boot, increasing the protection of the plug and density inside racks.

The cable is Category 6A S/FTP 27 AWG, which ensures greater flexibility (improved bend radius) in a patching environment.

All GIGAMEDIA patch cords exceed Category 6A requirements as specified in ANSI/TIA-568.2-D, ISO/IEC 11801 and EN 50173.

Patch cords are assembled in a controlled environment using advanced manufacturing processes to ensure stable quality and performance. All our patch cords are individually tested, to guarantee quality, and ensure your system avoids performance degradation.

SPECIFICATIONS

- Category 6A S/FTP
- Individual foiled pairs with TC overall braid
- Stranded annealed bare copper wire, 27AWG
- Standards: ISO/IEC 11801; EN 50173; IEC 61935-2 ; TIA-568.2-D
- Applications: IEEE 802.3: 10Base-T; 100Base-T; 1000Base-T; 2.5GBase-T; 5GBase-T & 10Gbit Ethernet IEEE 802.3af/at/bt (PoE/PoE+/4PPoE)
- Characteristic impedance: 100 Ω
- Frequency range: from 0 to 500 MHz
- Low Smoke : IEC 61034
- Zero Halogen IEC 60754
- Overall diameter: 5.7 mm
- Slim snagless coloured molded boots
- Individual label with unique ID included



ITEM CODE	PART NUMBER	DESCRIPTION	LENGTH	COLOUR
-	GGM CAT6AS03MWH	Patch lead, Cat 6A component, S/FTP, LSZH, with boots	0,3 m	White
3853087	GGM CAT6AS05MWH	Patch lead, Cat 6A component, S/FTP, LSZH, with boots	0,5 m	White
3853088	GGM CAT6AS1MWH	Patch lead, Cat 6A component, S/FTP, LSZH, with boots	1 m	White
-	GGM CAT6AS1M5WH	Patch lead, Cat 6A component, S/FTP, LSZH, with boots	1,5 m	White
3853089	GGM CAT6AS2MWH	Patch lead, Cat 6A component, S/FTP, LSZH, with boots	2 m	White
-	GGM CAT6AS2M5WH	Patch lead, Cat 6A component, S/FTP, LSZH, with boots	2,5 m	White
3853090	GGM CAT6AS3MWH	Patch lead, Cat 6A component, S/FTP, LSZH, with boots	3 m	White
-	GGM CAT6AS4MWH	Patch lead, Cat 6A component, S/FTP, LSZH, with boots	4 m	White
3853091	GGM CAT6AS5MWH	Patch lead, Cat 6A component, S/FTP, LSZH, with boots	5 m	White
-	GGM CAT6AS7MWH	Patch lead, Cat 6A component, S/FTP, LSZH, with boots	7 m	White
-	GGM CAT6AS8MWH	Patch lead, Cat 6A component, S/FTP, LSZH, with boots	8 m	White
3853092	GGM CAT6AS10MWH	Patch lead, Cat 6A component, S/FTP, LSZH, with boots	10 m	White
-	GGM CAT6AS15MWH	Patch lead, Cat 6A component, S/FTP, LSZH, with boots	15 m	White
-	GGM CAT6AS20MWH	Patch lead, Cat 6A component, S/FTP, LSZH, with boots	20 m	White
-	GGM CAT6AS25MWH	Patch lead, Cat 6A component, S/FTP, LSZH, with boots	25 m	White





GIGAMEDIA's category 6 copper range offers a solution to our customers that is comprehensive, and of great value. The product is compliant to ISO 11801 standards and has excellent crosstalk and system noise reduction capabilities.

It is designed to operate at 250 MHz and displays great headroom in field test results, especially on NEXT, Return Loss & ACR.

All products are tested individually, and together in a channel application to ensure its capability, and are backward compatible with Category 5E and Category 5 solutions. GIGAMEDIA also offers a 25-year system warranty.

FOR Cca, Dca, Eca CABLES



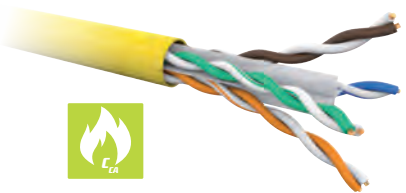
FOR ALL CABLES

- Standards: ISO/IEC 11801 ; EN 50173 ; ISO/IEC 24764 ; IEC 61156-5; ANSI/TIA-568.2-D
- Applications: IEEE 802.3: 10Base-T; 100Base-T ; 1000Base-T; 2.5GBase-T;& 5GBase-T
- Frequency range: from 0 to 250 MHz

CAT6 Cca

SOLID CABLES

- Conductor bare copper wire, 23 AWG
- U/UTP
- Yellow (RAL1021) LSHF-FR outer jacket
- Overall diameter: 6.1 mm
- Fire behaviour : Cca - s1a, d1, a1

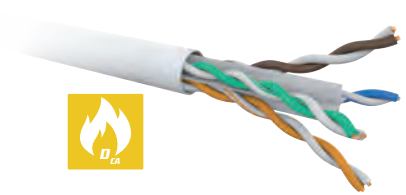


ITEM CODE	PART NUMBER	DESCRIPTION	EUROCLASS
0227170	GGM C6U4PFR0HT3	Cable 4 pairs CAT6 U/UTP 23 AWG LSHF-FR Yellow 305 m	Cca
0227171	GGM C6U4PFR0HT5	Cable 4 pairs CAT6 U/UTP 23 AWG LSHF-FR Yellow 500 m	Cca

CAT6 Dca

SOLID CABLE

- Conductor bare copper wire
- U/UTP
- White (RAL 9003) LSZH outer jacket
- Fire behaviour : Dca - s2, d2, a1

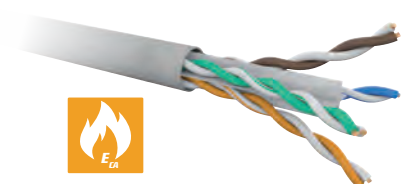


ITEM CODE	PART NUMBER	DESCRIPTION	EUROCLASS
0227179	GGM C6U4PZHBU3	Cable 4 pairs CAT6 U/UTP 23 AWG LSZH White 305 m	Dca
0227141	GGM C6U4PDCARU3	Cable 4 pairs CAT6 U/UTP 24 AWG LSZH White 305 m	Dca

CAT6 Eca

SOLID CABLE

- Conductor bare copper wire, 24 AWG
- U/UTP
- Grey (RAL 7035) PVC outer jacket
- Fire behaviour : Eca

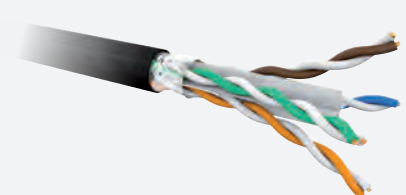


ITEM CODE	PART NUMBER	DESCRIPTION	EUROCLASS
0227132	GGM C6U4PECARU3	Cable 4 pairs CAT6 U/UTP 24 AWG PVC Grey 305 m	Eca

CAT6 U/UTP

OUTDOOR CABLE

- Conductor bare copper wire, 23 AWG
- U/UTP
- Black PE outer jacket



ITEM CODE	PART NUMBER	DESCRIPTION
0227154	GGM C6U4PPET3	Duct grade cable 4 pairs CAT6 U/UTP PE Black 305 m



TOOLLESS KEYSTONE JACKS

Our premium slim line Keystone jacks meet and exceed all Category 6 requirements, and support both wiring schemes T568 A & B.

In order to provide the highest level of reliability, plug insertion is rated up to 700 cycles minimum and the connectors contacts are designed in order to provide enhanced plug to jack connection integrity.

This new designed connector features a toolless termination method for quick and easy installation.



- Standards: ISO/IEC 11801 and EN 50173
- No specific tool required
- Gold plating: 50 µ



ITEM CODE	PART NUMBER	DESCRIPTION
3853024	GGM PRJC6UTL	CAT6 UTP slim toolless, unshielded keystone jack
3853025	GGM PRJC6UTL24	CAT6 UTP slim toolless, unshielded keystone jack (box of 24 pcs)

ITEM CODE	PART NUMBER	DESCRIPTION
3853026	GGM PANC6U24P	24 ports patch panel 1U + 24x CAT6 UTP RJ45 keystone jacks

EMPTY PANEL

- Unit size: 1U
- All ports are identified
- Removable rear management bar included
- Black colour panel

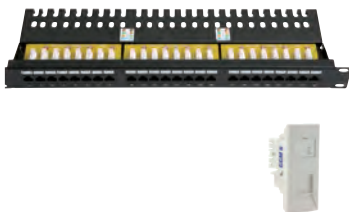


ITEM CODE	PART NUMBER	DESCRIPTION
3853028	GGM PAN24VK	Empty metal patch panel 24 port 1U black

IDC PUNCHDOWN

ITEM CODE	PART NUMBER	DESCRIPTION
3853031	GGM INIC6U24P	24-port CAT6 UTP IDC 90° 1U - complete with cable management

ITEM CODE	PART NUMBER	DESCRIPTION
3853086	GGM PLUKC6U	25 x 50 Euro module CAT6 UTP IDC



CAT6 U/UTP PATCHCORDS

GIGAMEDIA's CAT6 premium patch cords exceed Category 6 / Class E requirements as specified in ISO/IEC 11801.

Assembled in a controlled environment using advanced manufacturing process, they ensure stable quality and performance.

All our patchcords are individually tested, to guarantee quality, and ensure your system avoids performance degradation.

- Standards: ISO/IEC 11801 ; EN 50173
ANSI/TIA-568.2-D
- Characteristic impedance: 100 Ω
- Frequency range: from 0 to 250 MHz
- Slim Line coloured molded plastic boots
- Many colours available for all lengths less than 10 m

ITEM CODE	PART NUMBER	LENGTH	COLOUR
3853080	GGM CAT605M	0,5 m	Grey
3853081	GGM CAT61M	1 m	Grey
3853082	GGM CAT62M	2 m	Grey
3853083	GGM CAT63M	3 m	Grey
3853084	GGM CAT65M	5 m	Grey
3853085	GGM CAT610M	10 m	Grey





CAT5E U/UTP Eca

SOLID CABLES

- Standards: ISO/IEC 11801 and EN 50173
- Characteristic impedance: 100 Ω

- Frequency range: from 0 to 125 MHz
- Outer jacket: PVC
- 25 AWG



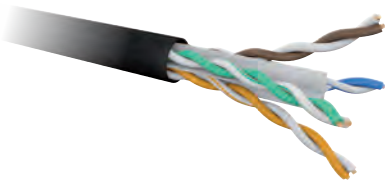
ITEM CODE	PART NUMBER	DESCRIPTION	EUROCLASS
0227112	GGM C5EU4PPVCU1	Cable 4 pairs CAT5e U/UTP PVC Grey 100 m	Eca
0227110	GGM C5EU4PPVCU3	Cable 4 pairs CAT5e U/UTP PVC Grey 305 m	Eca
-	GGM C5EU4PPVCT5	Cable 4 pairs CAT5e U/UTP PVC Grey 500 m	Eca

CAT5E U/UTP

OUTDOOR CABLE

- Standards: ISO/IEC 11801 ; EN 50173
- U/UTP
- Characteristic impedance: 100 Ω

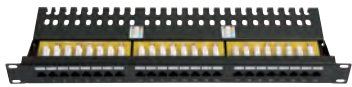
- Frequency range: from 0 to 100 MHz
- Black (RAL 9005) PE outer jacket
- 24 AWG



ITEM CODE	PART NUMBER	DESCRIPTION
0227136	GGM C5EU4PPET3	Duct grade cable 4 pairs CAT5e U/UTP PE Black 305 m

IDC

PUNCHDOWN



ITEM CODE	PART NUMBER	DESCRIPTION
3853032	GGM INIC5EU24P	24-port CAT5e UTP IDC 90° 1U - complete with cable management

ITEM CODE	PART NUMBER	DESCRIPTION
3853035	GGM PLUKC5EU	25 x 50 Euro module CAT5e UTP IDC

ITEM CODE	PART NUMBER	DESCRIPTION
3853033	GGM PLUK86SG	Single Gang Frame 86x86
3853034	GGM PLUK86DG	Double Gang Frame 86x146

CAT5E U/UTP

PATCHCORDS

- Standards: ISO/IEC 11801 ; EN 50173
- Characteristic impedance: 100 Ω
- Frequency range: from 0 to 100 MHz

- Slim Line coloured molded plastic boots
- Many colours available for all lengths less than 10 m



ITEM CODE	PART NUMBER	LENGTH	COLOUR
3850040	GGM CAT5E05M	0,5 m	Grey
3850041	GGM CAT5E1M	1 m	Grey
3850042	GGM CAT5E2M	2 m	Grey
3850043	GGM CAT5E3M	3 m	Grey
3850045	GGM CAT5E5M	5 m	Grey
3850049	GGM CAT5E10M	10 m	Grey
3850050	GGM CAT5E15M	15 m	Grey
3850051	GGM CAT5E20M	20 m	Grey

SURFACE MOUNT BOXES



- 6 port module included (x2)
- Up to 12 ports can be used for cat5E and CAT6 UTP solutions; 6 ports for cat6 & cat6A shielded solutions

- Rear cable management included

ITEM CODE	PART NUMBER	DESCRIPTION	DIMENSIONS
3853053	GGM BOX612KV	6 ports surface mount box	170 x 112 x 38 mm

- Colours: white
- Included: Fixing kit



ITEM CODE	PART NUMBER	DESCRIPTION	DIMENSIONS
3853051	GGM BOX001KV	Single port surface mount box	37 x 65 x 30 mm
3853052	GGM BOX002KV	Double port surface mount box*	60 x 65 x 30 mm

* Black version also available

FACEPLATES AND ADAPTERS



ITEM CODE	PART NUMBER	DESCRIPTION	DIMENSIONS
3853029	GGM PLIEIS	1 port faceplate - White	25 x 50 mm

ITEM CODE	PART NUMBER	DESCRIPTION	DIMENSIONS
3853018	GGM PLIELJ6	LJ6 keystone adapter	25 x 38.5 mm

- Protection class: IP20
- Colour: Light Grey RAL7035

- Labelling field paper strip
- Compatible with all Gigamedia keystone jacks



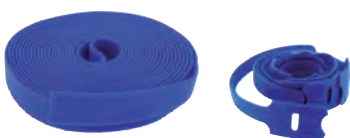
ITEM CODE	PART NUMBER	DESCRIPTION
3853046	GGM RJDIN	DIN rail keystone adapter

FRAMES AND BLANKERS

ITEM CODE	PART NUMBER	DESCRIPTION	DIMENSIONS
3853033	GGM PLUK86SG	Single Gang Frame	86 x 86 mm
3853034	GGM PLUK86DG	Double Gang Frame	86 x 146 mm

ITEM CODE	PART NUMBER	DESCRIPTION	DIMENSIONS
3853016	GGM PLIEB01	Blanker for PLUK86 faceplate	12.5 x 50 mm
3853017	GGM PLIEB02	Blanker for PLUK86 faceplate	25 x 50 mm

BACK TO BACK LOOP / HOOK CABLE TIE



ITEM CODE	PART NUMBER	DESCRIPTION	DIMENSIONS
3853057	GGM BBR205MB	Blue Back to Back Loop cable tie	5 m x 20 mm
3853061	GGM BBR205MN	Black Back to Back Loop cable tie	5 m x 20 mm
3853058	GGM BBT25200B	Blue Back to Back Hook cable tie	200 x 25 mm x10 pcs
3853062	GGM BBT25200N	Black Back to Back Hook cable tie	200 x 25 mm x10 pcs



**X10
PACK**



MODULAR PLUGS*

* Note : Check Cable/Plug compatibility prior to installation

ITEM CODE	PART NUMBER	DESCRIPTION
-	GGM MJ4P4C	10 pcs blister pack 4P4C RJ9
3853007	GGM MJ6P4C	10 pcs blister pack 6P4C RJ11
-	GGM MJ6P6C	10 pcs blister pack 6P6C RJ12
3853010	GGM MJ8EP8CR	10 pcs blister pack 8P8C RJ45 CAT5E / CAT6 UTP solid cable
-	GGM 2105XM45G	10 pcs blister pack grey molded RJ45 boots

**X100
PACK**



ITEM CODE	PART NUMBER	DESCRIPTION
3853009	GGM MJ8P8C100	100 pcs pack 8P8C RJ45 CAT5E UTP stranded cable
3853067	GGM MJ8EP8CR100	100 pcs pack 8P8C RJ45 CAT5E / CAT6 UTP solid cable
-	GGM RB100G	100 pcs pack grey molded RJ45 boots

- STP RJ45 CAT6/EA plug
- Dedicated to solid core AWG24/AWG23 GIGAMEDIA
- 8P/8C STP

- 2 parts plug
- Recommended tool : 907H8C6S



ITEM CODE	PART NUMBER	DESCRIPTION
3853054	GGM PLUGC6SRIGB	Pack of 10 RJ45 class EA modular plugs for GIGAMEDIA solid cables
-	GGM PLUGC6SRIGN	Pack of 10 RJ45 class EA modular plugs for GIGAMEDIA solid cables

Blue
Black



**PACK OF 10 PCS BLACK
RJ45 KEYSTONE BLANKER**

ITEM CODE	PART NUMBER	DESCRIPTION
3853047	GGM OBTURJ45K	Pack of 10 pcs Black RJ45 Keystone blanker

RJ45 crimping tool
for GGM class EA plugs
for solid cable
3853013
GGM 907H8C6S



High precision crimping tool
RJ45, RJ12, RJ11, RJ9
3853011
GGM 907H468B



Precision cable stripper
GGM 907X502



Precision cutting pliers
3853095
GGM 907CUT15S



Tool kit including:
cable stripper, cable cutter, continuity tester

3853014
GGM KITLC90

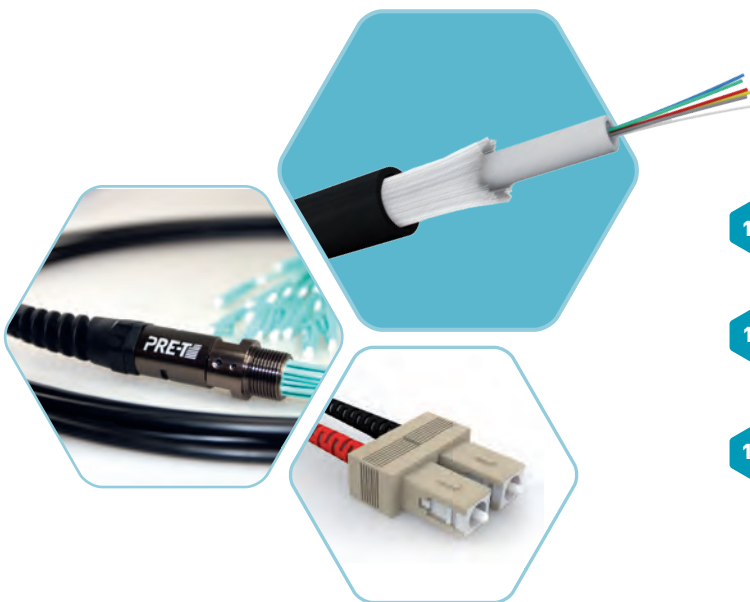
RJ45, RJ12
Continuity tester
3853019
GGM DIAGLC90

Cable stripper
3853012
GGM 907X501





FIBRE OPTIC SOLUTIONS



- 14 FIBRE OPTIC CABLES
- 15 PRE-TERMINATED CABLE ASSEMBLIES
- 16 FIBRE OPTIC PATCHPANELS
- 17 FIBRE OPTIC PATCHCORDS
- 18 FIBRE OPTIC BOXES
- 19 CLEANING TOOLS

TIGHT BUFFER 900 µm FIBRE OPTIC CABLE

LSZH-FR OUTER JACKET

- 4 to 24 fibres, IEC 60304 colour coded
- Multimode OM3 & OM4 50/125 µm or singlemode OS2 9/125 µm
- Indoor/outdoor use
- Water blocking glass yarns
- Easy strip tight buffered fibres
- Max pulling force: 500 N (4 fibres) to 1600 N (24 fibres)
- Crush resistance: 2000 N
- Black LSZH-FR & UV stable outer jacket
- Overall diameter: 5,8 mm (4 fibres) to 9,8 mm (24 fibres)
- Fire behaviour: Dca – s1, d1, a2

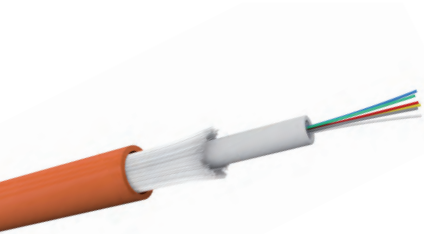


	OM3	OM4	OS2
4 Fibres	GGM F04BOM3ST	GGM F04BOM4ST	GGM F04B9ST
8 Fibres	GGM F08BOM3ST	GGM F08BOM4ST	GGM F08B9ST
12 Fibres	GGM F012BOM3ST	GGM F012BOM4ST	GGM F012B9ST
24 Fibres	GGM F024BOM3ST	GGM F024BOM4ST	GGM F024B9ST

CENTRAL LOOSE TUBE 250 µm FIBRE OPTIC CABLE

LSZH OUTER JACKET

- 4 to 24 fibres, IEC 60304 colour coded
- Multimode OM3 & OM4 50/125 µm or singlemode OS2 9/125 µm
- Indoor/outdoor use
- Water blocking glass yarns
- Central loose tube, 250 µm fibres
- Max pulling force: 1100 N
- Crush resistance: 2000 N
- Orange LSZH & UV stable outer jacket
- Overall diameter: 5,4 mm (4 fibres) to 6,4 mm (24 fibres)
- Fire behaviour: Eca

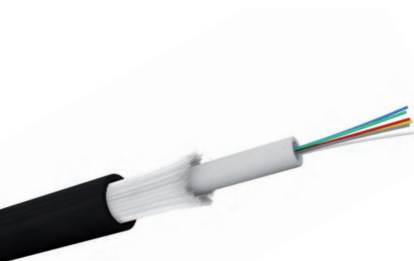


	OM3	OM4	OS2
4 Fibres	GGM F04BOM3LST	GGM F04BOM4LST	GGM F04B9LST
8 Fibres	GGM F08BOM3LST	GGM F08BOM4LST	GGM F08B9LST
12 Fibres	GGM F012BOM3LST	GGM F012BOM4LST	GGM F012B9LST
24 Fibres	GGM F024BOM3LST	GGM F024 BOM4LST	GGM F024B9LST

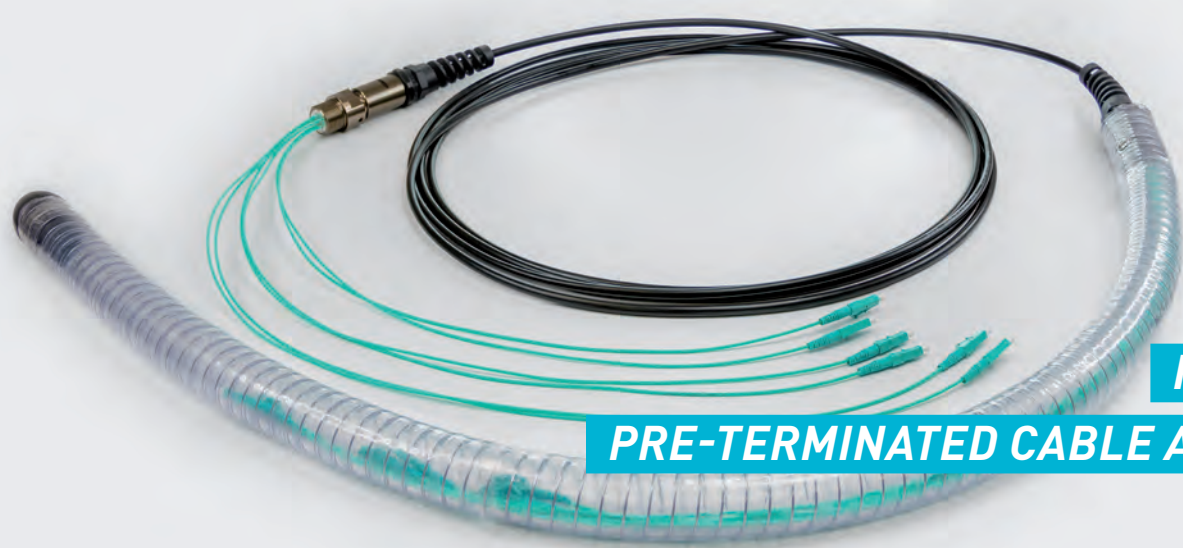
CENTRAL LOOSE TUBE 250 µm FIBRE OPTIC CABLE

PE OUTER JACKET

- 4 to 24 fibres, IEC 60304 colour coded
- Multimode OM3 & OM4 50/125 µm or singlemode OS2 9/125 µm
- Outdoor use
- Water blocking glass yarns
- Central loose tube, 250 µm fibres
- Max pulling force: 1100 N
- Crush resistance: 2000 N
- Black PE outer jacket, UV stabilized
- Overall diameter: 5,4 mm (4 fibres) to 5,8 mm (24 fibres)



	OM3	OM4	OS2
4 Fibres	GGM F04B3PEST	GGM F04B4PEST	GGM F04B9PEST
8 Fibres	GGM F08B3PEST	GGM F08B4PEST	GGM F08B9PEST
12 Fibres	GGM F012B3PEST	GGM F012B4PEST	GGM F012B9PEST
24 Fibres	GGM F024B3PEST	GGM F024B4PEST	GGM F024B9PEST



FIBRE OPTIC PRE-TERMINATED CABLE ASSEMBLIES

Preterminated cable assemblies are the ideal solution for environments with cable ducts or raised floor systems in commercial buildings, data centers, temporary installations.

GIGAMEDIA, has implemented its own workshop to provide high quality preterminated fibre optic assemblies, under tight deadlines.

Our fibre optic assemblies are made of selected high-grade components and manufactured in a stringent quality controlled environment.

QUALITY POLICY

To ensure a superior assembly, each component is selected and tested by our technicians.

STATE-OF-THE-ART FACILITY

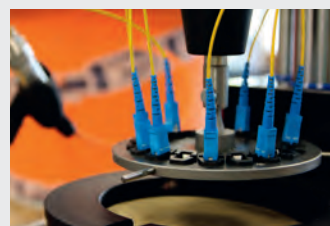
with high precision equipment, trained staff, clean room, automated polishing process & reliable quality plan

INDIVIDUAL TEST

Each assembly is individually tested, controlled and labelled. Test reports are joined to the product delivery. Each assembly has a unique tracking number

COST EFFECTIVENESS

- Easy deployment & installation
- plug'n play product No specific knowledge & tool required
- High quality factory terminated connectors
- No subcontractor needed on site
- No field termination
- Included: IL/RL test, userguide & accessories



4 CORES

ITEM CODE	PART NUMBER
0227160	GGM 4LTM3LCLC50KH
0227161	GGM 4LTM3LCLC80KH
0227162	GGM 4LTM3LCLC100KH
0227163	GGM 4LTM3LCLC150KH
0227164	GGM 4LTM3LCLC200KH

8 CORES

ITEM CODE	PART NUMBER
0227165	GGM 8LTM3LCLC50KH
0227166	GGM 8LTM3LCLC80KH
0227167	GGM 8LTM3LCLC100KH
0227168	GGM 8LTM3LCLC150KH
0227169	GGM 8LTM3LCLC200KH

DESCRIPTION
4/8 fibres OM3 LC/LC Indoor/Outdoor central loose tube LSZH 50 m
4/8 fibres OM3 LC/LC Indoor/Outdoor central loose tube LSZH 80 m
4/8 fibres OM3 LC/LC Indoor/Outdoor central loose tube LSZH 100 m
4/8 fibres OM3 LC/LC Indoor/Outdoor central loose tube LSZH 150 m
4/8 fibres OM3 LC/LC Indoor/Outdoor central loose tube LSZH 200 m

*Other constructions and lengths available on request

PRE-LOADED MM & SM PATCH PANELS

WITH SC & LC ADAPTERS



Pre-loaded with 6 to 24 SC or LC adapters, these sliding patch panels offer a very good quality/price ratio.

SPECIFICATIONS

- 12 or 24 ports patch panel
- 2x3 cable entries
- Supplied with: splice trays, spooling clips, obturators, 2x PG 13.5 cable glands, screws
- Black colour
- Dimensions: 482 x 206 x 44 mm
- Weight: 2.5 kg



MULTIMODE

ITEM CODE	PART NUMBER	DESCRIPTION
3850902	GGM T06SCDMM	12 port patch panel pre-loaded with 6 SC duplex MM adapters
3850903	GGM T012SCDMM	12 port patch panel pre-loaded with 12 SC duplex MM adapters
3850904	GGM T024SCDMM	24 port patch panel pre-loaded with 24 SC duplex MM adapters
3850905	GGM T06LCDMM	12 port patch panel pre-loaded with 6 LC duplex MM adapters
3850906	GGM T012LCDMM	12 port patch panel pre-loaded with 12 LC duplex MM adapters
3850907	GGM T024LCDMM	24 port patch panel pre-loaded with 24 LC duplex MM adapters

SINGLEMODE

ITEM CODE	PART NUMBER	DESCRIPTION
3850908	GGM T06SCDSM	12 port patch panel pre-loaded with 6 SC duplex SM adapters
3850909	GGM T012SCDSM	12 port patch panel pre-loaded with 12 SC duplex SM adapters
3850910	GGM T024SCDSM	24 port patch panel pre-loaded with 24 SC duplex SM adapters
3850911	GGM T06LCDSM	12 port patch panel pre-loaded with 6 LC duplex SM adapters
3850912	GGM T012LCDSM	12 port patch panel pre-loaded with 12 LC duplex SM adapters
3850913	GGM T024LCDSM	24 port patch panel pre-loaded with 24 LC duplex SM adapters

SPLICE TRAY

- Capacity: 24 fusion splices
- Integrated fibre management
- Screw fixation (Ø 5 mm holes)
- Stackable: up to 3 trays in a 1U patch panel



ITEM CODE	PART NUMBER	DESCRIPTION
-	GGM 24FOTRAY	2 x 12 fusion splice tray + transparent cover

PIGTAILS

- Pack of 12 pigtails, IEC 60304 colour coded
- Tight buffer 900 µm "Easy strip" jacket
- Mating cycles : 1000 (variation 0,2 dB)
- Temperature range during operation: - 5 °C à + 60 °C
- Individual IL/RL test supplies with each item
- Unique serial number
- Connectors 100% compliant to IEC 61754 standard components



	OM3	OM4	OS2
SC	GGM S4MPC2ML	GGM S5MPC2ML	GGM S3MPC2ML
LC	GGM S4MLC2ML	GGM S5MLC2ML	GGM S3MLC2ML

HEAT-SHRINK TUBES

- Mechanical stability & efficient protection of the splice
- Pack of 100 pcs



ITEM CODE	PART NUMBER	DESCRIPTION
-	GGM PROTHERM45L	45 mm heat-shrink tubes- pack of 100
-	GGM PROTHERM60L	60 mm heat-shrink tubes- pack of 100



FIBRE OPTIC PATCH CORDS

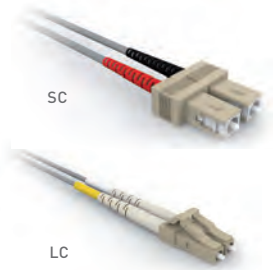
LC patch cords

SC patch cords

- PC/UPC polishing
- Mating cycles : 1000 (variation 0,2 dB)
- Temperature range during operation: - 5°C à + 60°C
- Individual IL/RL test comes with each item

- Unique serial number
- OM3: Grey jacket, OM4: Aqua jacket, OS2: Yellow jacket
- Connectors 100% compliant to IEC 61754 component standard

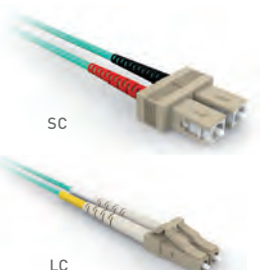
OM3



ITEM CODE	PART NUMBER	DESCRIPTION			
-	GGM D4MCC1M	SC/SC	OM3 50/125µm	1 m	duplex patchcord
-	GGM D4MCC2M	SC/SC	OM3 50/125µm	2 m	duplex patchcord
-	GGM D4MCLC1M	LC/SC	OM3 50/125 µm	1 m	duplex patchcord
-	GGM D4MCLC2M	LC/SC	OM3 50/125 µm	2 m	duplex patchcord
-	GGM D4MLC1C1M	LC/LC	OM3 50/125 µm	1 m	duplex patchcord
-	GGM D4MLC1C2M	LC/LC	OM3 50/125 µm	2 m	duplex patchcord

Note : Other colours & lengths available

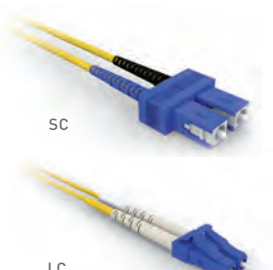
OM4



ITEM CODE	PART NUMBER	DESCRIPTION			
-	GGM D5MCC1M	SC/SC	OM4 50/125 µm	1 m	duplex patchcord
-	GGM D5MCC2M	SC/SC	OM4 50/125 µm	2 m	duplex patchcord
-	GGM D5MCLC1M	LC/SC	OM4 50/125 µm	1 m	duplex patchcord
-	GGM D5MCLC2M	LC/SC	OM4 50/125 µm	2 m	duplex patchcord
-	GGM D5MLC1C1M	LC/LC	OM4 50/125 µm	1 m	duplex patchcord
-	GGM D5MLC1C2M	LC/LC	OM4 50/125 µm	2 m	duplex patchcord

Note : Other colours & lengths available

OS2

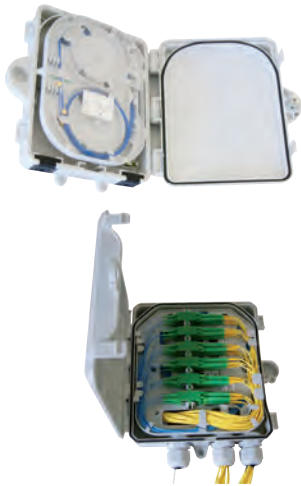


ITEM CODE	PART NUMBER	DESCRIPTION			
-	GGM D3MCC1M	SC/SC	OS2 9/125 µm	1 m	duplex patchcord
-	GGM D3MCC2M	SC/SC	OS2 9/125 µm	2 m	duplex patchcord
-	GGM D3MCLC1M	LC/SC	OS2 9/125 µm	1 m	duplex patchcord
-	GGM D3MCLC2M	LC/SC	OS2 9/125 µm	2 m	duplex patchcord
-	GGM D3MLC1C1M	LC/LC	OS2 9/125 µm	1 m	duplex patchcord
-	GGM D3MLC1C2M	LC/LC	OS2 9/125 µm	2 m	duplex patchcord

Note : Other colours & lengths available

INDOOR/OUTDOOR FIBRE OPTIC BOXES

Featuring an IP65 protection, these optical boxes are specially designed for indoor / outdoor use. They answer to FTTx applications in residential areas (pole mounting possible) or industrial applications. Available in two versions: 2 or 12 ports.



- For up to 4 or 24 fibres
- IP65 + UV resistant / IK 06
- Connection with adapters (SC simplex or LC duplex) and/or fusion splices
- Integrated splice tray & spooling cable management
- Protection tubes
- Key locker
- RAL7035 (grey)
- 3 cable entries at the bottom
- Sold with fixing accessories & user guide
- Dimensions: 220 x 200 x 50 mm (IP65BOX24FO)
180 x 165 x 43 mm (IP65BOX4FO)

ITEM CODE	PART NUMBER	DESCRIPTION
-	GGM IP65BOX4FO	4 FO optical wall mount box for 2 SC simplex adapters or LC duplex adapters
-	GGM IP65BOX24FO	24 FO optical wall mount box for 12 SC simplex adapters or LC duplex adapters

INDOOR FIBRE OPTIC WALL BOX

- 6 fibres wall box
- Grey RAL 7035
- IP 20 indoor environment
- Integrated splice tray
- Cable entries at the back
- Dimensions: 55 x 160 x 250 mm (H x L x D)
- To be loaded with SC or LC adapter modules



ITEM CODE	PART NUMBER	DESCRIPTION
-	GGM BOXOPTIC2	6 fibre wall mount box
-	GGM PAG6C	6 SC simplex or LC duplex adapters module - Grey
-	GGM PAG3CD	3 SC duplex or LC quad adapters module - Grey
-	GGM PAG4CD	4 SC duplex or LC quad adapters module - Grey

ADAPTERS

		SIMPLEX	DUPLEX	QUAD
SC	MM	GGM RACCCP	GGM RACCCP2, GGM RACCCP2AQUA (OM3/OM4)	-
	SM	GGM RACMOCCS	GGM RACCCP2SC	-
LC	MM	-	GGM RACLCLCMM, GGM RACLCLCAQUA (OM3/OM4)	GGM RACLCLCQMM, GGM RACLCLCQA (OM3/OM4)
	SM	-	GGM RACLCLCSM	GGM RACLCLCQSM

INDUSTRIAL DIN RAIL BOXES

Easy to install and with a compact design, the Gigamedia DINFO box allow the user to connect up to 12 fibres. This box is a real added value that allows mixing fibre resources with electrical resources inside industrial cabinets.

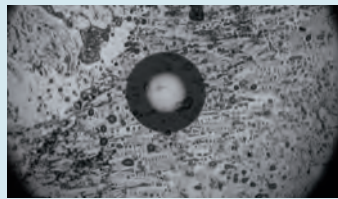


- Loaded with 6 SC or LC duplex adapters
- Multimode & Singlemode versions
- Integrated splice holders (fusion splices)
- Rear or aside DIN rail fixation
- IP20 protection
- 2x rear entries (PG 11 cable gland)
- Colour: grey (RAL 7035)
- Temperature range : -40 °C to +70 °C
- Dimensions : 35 (W) x 125 (H) x 155 mm
- Other configurations available on request

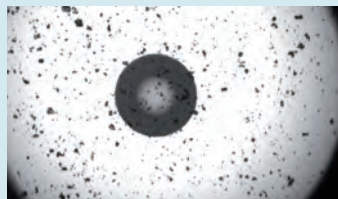
ITEM CODE	PART NUMBER	DESCRIPTION
-	GGM DINFO6SCMM	DIN RAIL fibre box loaded with 6 SC duplex MM adapters
-	GGM DINFO6SCSM	DIN RAIL fibre box loaded with 6 SC duplex SM adapters
-	GGM DINFO6LCMM	DIN RAIL fibre box loaded with 6 LC duplex MM adapters
-	GGM DINFO6LCSM	DIN RAIL fibre box loaded with 6 LC duplex SM adapters

CLEANING TOOLS

Connectors cleanliness is critical to ensure high bitrate signal transmissions.



FINGERPRINTS



DUST



TEXTILE PARTICLES



CLEANING KIT

Gigamedia's cleaning and inspection kit is a must-have for fibre optic installers.

Comprehensive and compact-sized, it contains all tools needed for an efficient cleaning of fibre optic ends (connectors, adapters) and is the ideal solution for a daily field use.

INCLUDES:

- 1 x Visual fault locator (GGM VFL1MW)
- 1 x Cletops cassette cleaner (GGM CLETOPS)
- 2 x Cleaning pens for ST / SC / FC (GGM CLEANER) or LC connectors (GGM CLEANERLC)

ITEM CODE	PART NUMBER	DESCRIPTION
-	GGM CLEANKIT	Fibre optic cleaning kit

CLEANING AND PREPARATION KIT

KIT

A complete toolbox for your connections and tests

INCLUDES:

- 1 x Visual fault locator (GGM VFL1MW)
- 1 x Cletops cassette cleaner (GGM CLETOPS)
- 2 x Cleaning pens for ST/SC/FC (GGM CLEANER) and LC connectors (GGM CLEANERLC)
- 1 x Aramid & kevlar cutting shears (GGM C151)
- 1 x Fibre stripper (3 mm / 900 µm / 250 µm) (GGM STRIPPER)
- 10 x IPA pre-saturated wipes (GGM 161050PK)
- 1 x Precision cable stripper (GGM 907X502)

ITEM CODE	PART NUMBER	DESCRIPTION
-	GGM FOKITPREP	Fibre optic cleaning & preparation kit

TOOLING

A key toolkit to prepare fibre optic cables.

INCLUDES:

- Rotary cable stripper Ø 4-25 mm (GGM RCS20)
- Aramid & kevlar cutting shears (GGM C151)
- Fibre stripper Ø 3 mm / 900 µm / 250 µm (GGM STRIPPER)

ITEM CODE	PART NUMBER	DESCRIPTION
-	GGM FOKIT	Fibre optic tool kit
-	GGM RCS20	Rotary cable stripper Ø 4-25 mm
-	GGM STRIPPER	Ø 3 mm / 900 µm / 250 µm stripper
-	GGM C151	Kevlar shears





In addition to its product portfolio, **GIGAMEDIA** offers **extra services** which greatly reduce operational expenditure.

FIBRE ASSEMBLIES



LABELLING AND IDENTIFICATION



COPPER ASSEMBLIES



PRE-EQUIPPED RACKS



KITTING

**SAVE TIME AND MONEY,
MAKE YOUR LIFE EASIER !**

VALUE-ADDED PARTNER
OF YOUR SUCCESS!



ENCLOSURES

SOLUTIONS & ACCESSORIES



22

19" CEILING
BOX

23

19" WALLMOUNT AND FLOOR STANDING
CABINETS

24

19"
ACCESSORIES

www.gigamedia.net



GIGAMEDIA
SMART BUILDING SOLUTIONS



CEILING BOX

19" CABINET FITS IN THE SUSPENDED CEILING



Key lock



Compact and discrete



THE FAST PACE OF TECHNOLOGY DEVELOPMENTS TOWARDS FULL-IP SOLUTIONS REQUIRES SMART BUILDINGS TO EVOLVE IN TERMS OF WIRING INFRASTRUCTURE.



Full wiring access

Secure opening



4U adjustable depth



PRODUCT FEATURES:

- ▶ Mechanically welded galvanized steel frame
- ▶ 2 x 19" 4U (galvanized steel) mounting profiles adjustable in depth
- ▶ Steel door (RAL 9010) with ventilation holes, 90° opening, with key lock
- ▶ Gas cylinders for secure opening
- ▶ 4 cable entries located on the sides (cable management and shutter included)
- ▶ External dimensions: 595 x 595 x 315 mm
- ▶ Inner depth: 300 mm
- ▶ Load capacity: 20 kg / 44 Lbs
- ▶ Installation: in place of a suspended ceiling tile, suspended from the building's structure (4 attachment points provided)
- ▶ Earthing kit included

ITEM CODE	PART NUMBER	DESCRIPTION
3854024	GGM CBOX	19" Ceiling mount cabinet CBOX

IPBOX

IP55 19" WALLMOUNT CABINETS

Door with hot-poured polyurethane gasket.

Available with safety glass door with metal frame or full metal door

Cable entry plates (top and bottom) with hot-poured polyurethane gasket, screw fixing.

Two locking points to ensure uniform pressure of the door gasket on the cabinet frame.

Delivered with wall mounting brackets.

Key lock type "butterfly button" for better ergonomics handling.

Accessory : Pole mounting bracket



GGM COFFPIPB

IP 55

SPECIALLY DESIGNED TO MEET (ACCORDING TO THEIR CLASSIFICATION) THE REQUIREMENTS OF SOME PREMISES (E.G.: INDUSTRY, WAREHOUSE, PARKING...). THE IPBOX IS CHARACTERIZED BY THE DEGREE OF PROTECTION IT PROVIDES AGAINST DUST (NO HARMFUL DEPOSIT) AND AGAINST LOW-PRESSURE WATER JETS SPRAYED FROM ANY DIRECTIONS, ACCORDING TO IEC 60529.

- Design: steel, assembly by welding
- 19" mounting profiles: 2, adjustable in depth
- Front door: reversible security glass door with frame or full metal (according to the versions), can be opened up to 180°, locked

- by using key locks (N°333)
- Cable entries: on the top and the bottom
- Width: 600 mm
- Depth: 500 mm
- Colour: RAL 7035

- Protection class: IP55
- Load capacity: 60 kg
- Delivered with earthing kit and wall mounting brackets

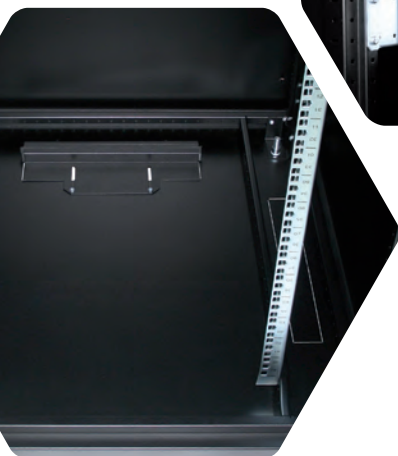
ITEM CODE	PART NUMBER	DESCRIPTION				
-	GGM COF6U500IP55V	19" Wallmount cabinet	6 U	600x500	glass door	Grey
-	GGM COF9U500IP55V	19" Wallmount cabinet	9 U	600x500	glass door	Grey
-	GGM COF12U500IP55V	19" Wallmount cabinet	12 U	600x500	glass door	Grey
-	GGM COF15U500IP55V	19" Wallmount cabinet	15 U	600x500	glass door	Grey
-	GGM COF18U500IP55V	19" Wallmount cabinet	18 U	600x500	glass door	Grey
-	GGM COF21U500IP55V	19" Wallmount cabinet	21 U	600x500	glass door	Grey
-	GGM COF6U500IP55P	19" Wallmount cabinet	6 U	600x500	full metal door	Grey
-	GGM COF9U500IP55P	19" Wallmount cabinet	9 U	600x500	full metal door	Grey
-	GGM COF12U500IP55P	19" Wallmount cabinet	12 U	600x500	full metal door	Grey
-	GGM COF15U500IP55P	19" Wallmount cabinet	15 U	600x500	full metal door	Grey
-	GGM COF18U500IP55P	19" Wallmount cabinet	18 U	600x500	full metal door	Grey
-	GGM COF21U500IP55P	19" Wallmount cabinet	21 U	600x500	full metal door	Grey
-	GGM COFFPIPB	Pole mounting bracket				



19" CABLING FLOOR STANDING CABINETS

GIGARACK S70 TYPE

- Frame: steel, assembly by screws
- 19" mounting profiles: 2, adjustable in depth (zinc plated steel), U marking
- Front door: smoked toughened glass reversible with lateral profiles, can be opened up to 190°, locked by swing handle with a key lock (N°333)
- Rear & side panels: removable, locked by latches and key lock (N°333)
- Top: with natural ventilation holes and rear cable entry system 800 mm width cabinets are also equipped with pre-cut holes in the sides for cable entry
- Bottom: full with rear cable entry system 800 mm width cabinets are also equipped with pre-cut holes in the sides for cable entry
- Support: adjustable feet
- Load capacity: 900 kg

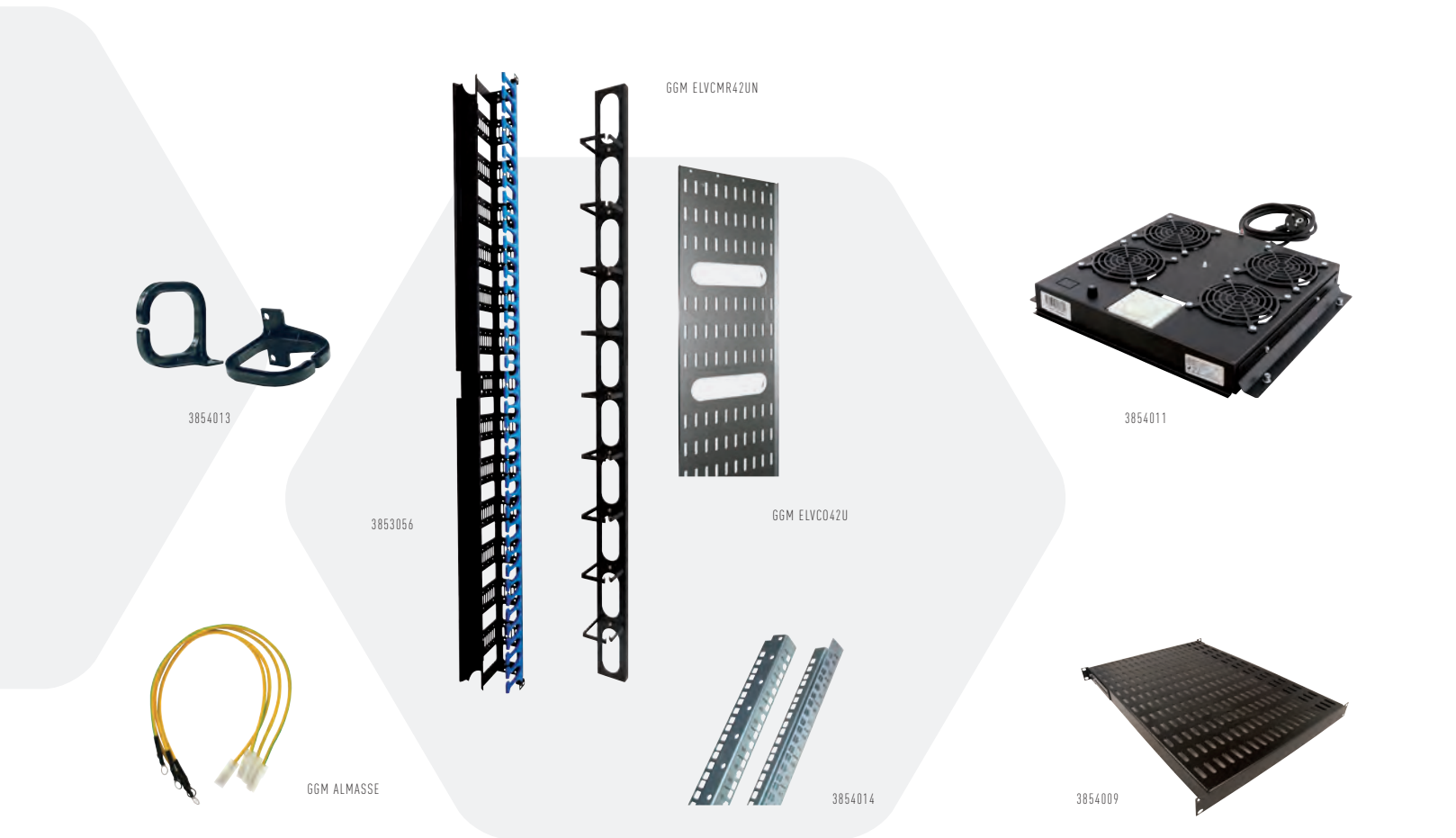


3854002

ITEM CODE	PART NUMBER	DESCRIPTION			
3854015	GGM EL2666N	19" Cabling floor standing cabinet	26U	600x600	Black
3854002	GGM EL4266N	19" Cabling floor standing cabinet	42U	600x600	Black
3854004	GGM EL4288N	19" Cabling floor standing cabinet	42U	800x800	Black
3854003	GGM EL42810N	19" Cabling floor standing cabinet	42U	800x1000	Black
3854019	GGM FS7047810B	19" Cabling floor standing cabinet	47U	800x1000	Black
3854020	GGM FS7041810PDB	19" Cabling floor standing cabinet with front and rear simple perforated doors	47U	800x1000	Black



19" CABLING FLOOR STANDING CABINET
ACCESSORIES



ITEM CODE	PART NUMBER	DESCRIPTION
3854016	GGM ELMON26U	Set of 2 19" rear mounting profiles 26U
3854014	GGM ELMON42U	Set of 2 19" rear mounting profiles 42U
3853048	GGM ELMONK800	Adaptor kit for 800 mm width cabinets
3854008	GGM ELEF400N	19" fixed shelf 1U – 4 fixing points – depth 400 mm
3854009	GGM ELEF600N	19" fixed shelf 1U – 4 fixing points – depth 600 mm
3853056	GGM ELVCMHD42UN	Duct vertical cables management (set of 2)
-	GGM ELVCMR42UN	Set of 2 rings vertical cables management
3854013	GGM AL5ABV	Set of 5 vertical cable management rings
-	GGM ELVCO42U	Cable tray 42U
3854010	GGM EL2VENN	Fan unit (2 fans)
3854011	GGM EL4VENN	Fan unit (4 fans)
-	GGM ELMASSE	Earthing kit



3854005

19" WALLMOUNT CABINETS

INIBOX II

- Design : Steel, assembly by welding
- 19" mounting profiles : 2, adjustable in depth
- Front door : Reversible security glass door with side profiles, can be opened up to 180°, locked by using key lock
- Side panels : Removable for easier access, locked by using key lock (N°333)
- Cable entries : On the top and the bottom
- Ventilation : Ventilated
- Width : 540 mm
- Depth : 450 or 600 mm
- Colour : RAL 9005
- Load capacity : 50 kg
- Earthing kit included

ITEM CODE	PART NUMBER	DESCRIPTION			
3854005	GGM WM6450B	19" wallmount cabinet	6U	540x450	Black
3854006	GGM WM9450B	19" wallmount cabinet	9U	540x450	Black
3854007	GGM WM12450B	19" wallmount cabinet	12U	540x450	Black
3854021	GGM WM15600B	19" wallmount cabinet	15U	540x600	Black
3854022	GGM WM18600B	19" wallmount cabinet	18U	540x600	Black
3854023	GGM WM21600B	19" wallmount cabinet	21U	540x600	Black



3853059



GGM PGCA1N



GGM DCMPHD1N

19" ACCESSORIES

ITEM CODE	PART NUMBER	DESCRIPTION		
3853059	GGM ARPPCA1N	19" ring cable management panel	1 U	Black
-	GGM PGCA1N	19" High capacity rings cables management panel	1 U	Black
-	GGM DCMPHD1N	19" High capacity duct cables management panel	1 U	Black
-	GGM ARPBC1N	19" brush cable management panels	1 U	Black
3854017	GGM ARPLM250N	19" fixed shelf 2U – 2 fixing points – depth 250 mm		Black
3854018	GGM ARPLM375N	19" fixed shelf 2U – 2 fixing points – depth 375 mm		Black
-	GGM DINSUP	19" DIN rail support		
3853055	GGM VER3095	Blister of 30 screws + cage nuts + washers		
-	GGM VER10095	Box of 100 screws + cage nuts + washers		



3853036



3853038

10" WALLMOUNT CABINET

123 CONNECT

- Design : Steel, assembly by welding
- 10" mounting profiles : 2
- Door locked by using key lock
- Cable entries : On the top and the bottom
- Height : 360 mm
- Width : 360 mm
- Depth : 255 mm
- Capacity : 8 modules
- Colour : RAL 9005

ITEM CODE	PART NUMBER	DESCRIPTION	
3853036	GGM 123CAB8N	10" wallmount cabinet	Black
3853042	GGM 123SM1UN	10" Fixed shelf - depth 155 mm	Black
3853041	GGM 123P01UN	10" Blanking panel 1 module	Black
3853040	GGM 123P015UN	10" Blanking panel 1.5 module	Black
3853038	GGM 123P86UGMN	8 ports Cat6 UTP patch panel	Black
3853037	GGM 123CLIP20N	Set of 20 clips 1/4 turn	Black



VIDEOSURVEILLANCE SECURITY



28 IP & AHD
VIDEOSURVEILLANCE KIT

28 IP DOME CAMERA
5MP

29 MONITOR
HDMI/VGA



INITIO IP KIT 5MP WITH DOME CAMERAS

This 5 MP kit is composed with one NVR 4 channel including 1TB HDD and two 5MP black dome IP cameras. You can add up to two additional cameras on the NVR. NVR include POE port to power camera up to 90 m. NVR can display video up to 4K using HDMI output. GGM VIEW app is available on Playstore and Apple store to get remote surveillance on your NVR. This kit is dedicated for home use, retail shop and all other small project that need surveillance.

Camera features:

- Type of sensor: 1/2.7" SC5235 Progressive CMOS
- Infrared: 25 m
- Sensitivity: 0.05 lx
- Compression: H265
- Focal lens: 2.8 mm
- Angle of view (horizontale): 92°
- Frame/s.: 15
- Resolution: 5 MP (2592 x 1944)
- IP rate: IP66
- Installation environment: indoor/outdoor
- Shape: Dome
- Operating temperature: -30 °C +45 °C
- Power supply: PoE (802.3af) or 12 V DC
- Consumption: 7 W
- WDR: digital
- ONVIF: version 2.6

NVR Features

- Number of channel: 4
- Maximum recording resolution: 4K
- Recording bandwidth: 50 Mbps
- LAN: RJ45 ethernet port : 4 x Mbps PoE
- WAN: RJ45 ethernet port: 1000 Mbps
- Free HDD slot: 1 (delivered with 1 TB HDD)
- I/O alarm: no
- USB: 2 x USB 2.0
- Format: desktop
- P2P support
- Upnp support
- Video output : HDMI (up to 4K) VGA (up to 1080P)
- Power supply: 48 V DC included
- Mobile App: GGM VIEW

ITEM CODE	PART NUMBER	DESCRIPTION
3859960	GGM KITIP24CD5MPBECO	INITIO Kit 5mp with dome cameras

IP DOME CAMERA 5MP FIXED LENS 2.8MM



- Type of sensor: 1/2.7" SC2315H Progressive CMOS
- Infrared: 30 m
- Sensitivity: 0.1 lx
- Compression: H265/H264
- Lens: fixed lens 2.8 mm
- Angle of view (horizontal): 92°
- Frame/sec.: 15
- Resolution: 5MP
- IP rate : IP66
- Installation environment: indoor/outdoor
- Shape: Dome
- Operating temperature: -30 °C - 55 °C
- Power supply: PoE (802.3af) or 12 V DC
- Consumption: <7 W
- WDR: numérique
- ONVIF: version 2.6

ITEM CODE	PART NUMBER	DESCRIPTION
3859961	GGM IPCED5F28	IP DOME camera 5mp fixed lens 2.8mm



TECHNICAL SUPPORT

Technical self-service portal GIGAMEDIA:

<https://support.gigamedia.net>



AHD KIT

4 AHD 1080P DOME CAMERAS + DVR + 1 TB HDD + 18 M CABLES

This complete CCTV GIGAMEDIA KIT AHD* comes with an H.264 DVR, four IR dome cameras (20 m night vision - 1080P resolution), power adaptor, four camera cables (18 m) and camera brackets included. Cutting-edge security technology made easy, at an affordable price! Go for high definition CCTV.

- 4x AHD Dome Camera 1080P infrared day/night indoor/outdoor waterproof IP66
- DVR H264 compression (4 channels) mutli-language
- 1 TB hard drive installed
- Power adapter and one 1-to-5 power cable adapter
- 4x combined video and power cables (18 m)
- Optical mouse and 1x remote control for DVR
- Quick start guide
- CD software
- 2 years warranty

ITEM CODE	PART NUMBER	DESCRIPTION
3859950	GGM CCEL2KITAHD4	kit AHD 1080p 4 cameras + 1 TB hdd

ECONOMICAL 21.5 INCH MONITOR HDMI/VGA



- Panel: LED
- Size: 21.5 inches
- Response time: 5ms
- Ratio 16:9*
- Colour: 16.7M, 8 bits
- Angle of view H/V: 178°/178°
- Contrast 250 cd/m2
- Resolution 1920 x 1080
- input HDMI/VGA
- Speaker: 2x 2W
- Support VESA 75
- Delivered with HDMI cord and power supply
- Consumption 22W
- Colour: Matt Black

ITEM CODE	PART NUMBER	DESCRIPTION
-	GGM CCMLCD21PPHVE	Economical 21.5 Inch monitor HDMI/VGA



GGM VIEW is a **free app** allowing you to remotely access the device via smartphone or tablet.



Wi-Fi KIT
NVR + 2 BATTERY CAMERAS

**A CCTV kit without the need
to power the cameras is now possible!**



The GIGAMEDIA kit is composed of two battery-powered cameras and a recorder with 1 TB storage.

Cameras with a resolution of 2MP are equipped with batteries so that they can be installed in isolated locations where no cables can be installed.

They can be installed outdoors and have a PIR sensor for motion detection recordings up to 10 m. The 2.8 mm lens allows a wide viewing angle of 120°, night vision has a range of 8 m, it also has a microphone and a speaker for two-way communication via the smartphone.

The camera battery can be removed from the camera without disassembling the camera from its mounting bracket. This allows a quick intervention in the battery charging process. Each battery has an autonomy of 5 months*.

Intended for SoHo premises and domestic applications, this kit allows removing the doubt of an intrusion.

The Wi-Fi range of the cameras is given for a distance of 50 m line of sight**.

The recorder is capable of supporting up to 6 cameras (additional camera: GGM KITWIFICAMB).

Recordings are triggered on motion detection only*** when the camera is on battery. A 1 Tb hard drive is built into the kit.



GGM KITWIFICAMB



GGM BATTERYCAM



GGM KITWIFICAMB



GGM BATTERYCAM



GGM KITWIFISOLP

Camera features:

- Sensor 1/2.7" Progressive CMOS
- Resolution: 2MP (1920 x 1080)
- Minimum illumination: 0.05 lx @ F1.2 (AGC ON); 0 lx with IR
- S/B: 40 dB
- Lens: 2.8 mm
- Angle of view: 120°(horizontal)
- Battery consumption: 420 mA (active); 400 µA (stand by)
- Operating temperature: -30 °C to 55 °C
- IP rate IP66
- IR distance: 8 m, 100°, 850 nm
- PIR: 10 m, 115°
- Battery capacity: 2900 mA x 3
- Battery life cycle: environ 350

NVR features:

- Max channel: 6
- HDD: 1 TB included (2.5" size)
- 1 SD card slot max 128 Gb
- Simultaneous view, playback, backup & remote monitoring
- Video output: HDMI up to 1080P
- Live display 1/4/6
- Record on motion
- motion détection: yes
- Recording schedule
- Codec: H264
- 1 x RJ-45 10/100 Mbps
- Max Bandwidth 32 Mbps
- Power supply 12 V DC / 2 A
- Mobile App GGM VIEW

ITEM CODE	PART NUMBER	DESCRIPTION
3859956	GGM KITWIFI2CB	Kit NVR + 2 battery cameras
3859958	GGM BATTERYCAM	Additional battery for KITWIFICAMB White
3859957	GGM KITWIFICAMB	Additional camera + battery for KITWIFI2CB White
-	GGM BATTERYCAMB	Additional battery for KITWIFICAMB Black
-	GGM KITWIFICAMB	Additional camera + battery for KITWIFI2CB Black
-	GGM KITWIFISOLP	Solar panel for battery camera

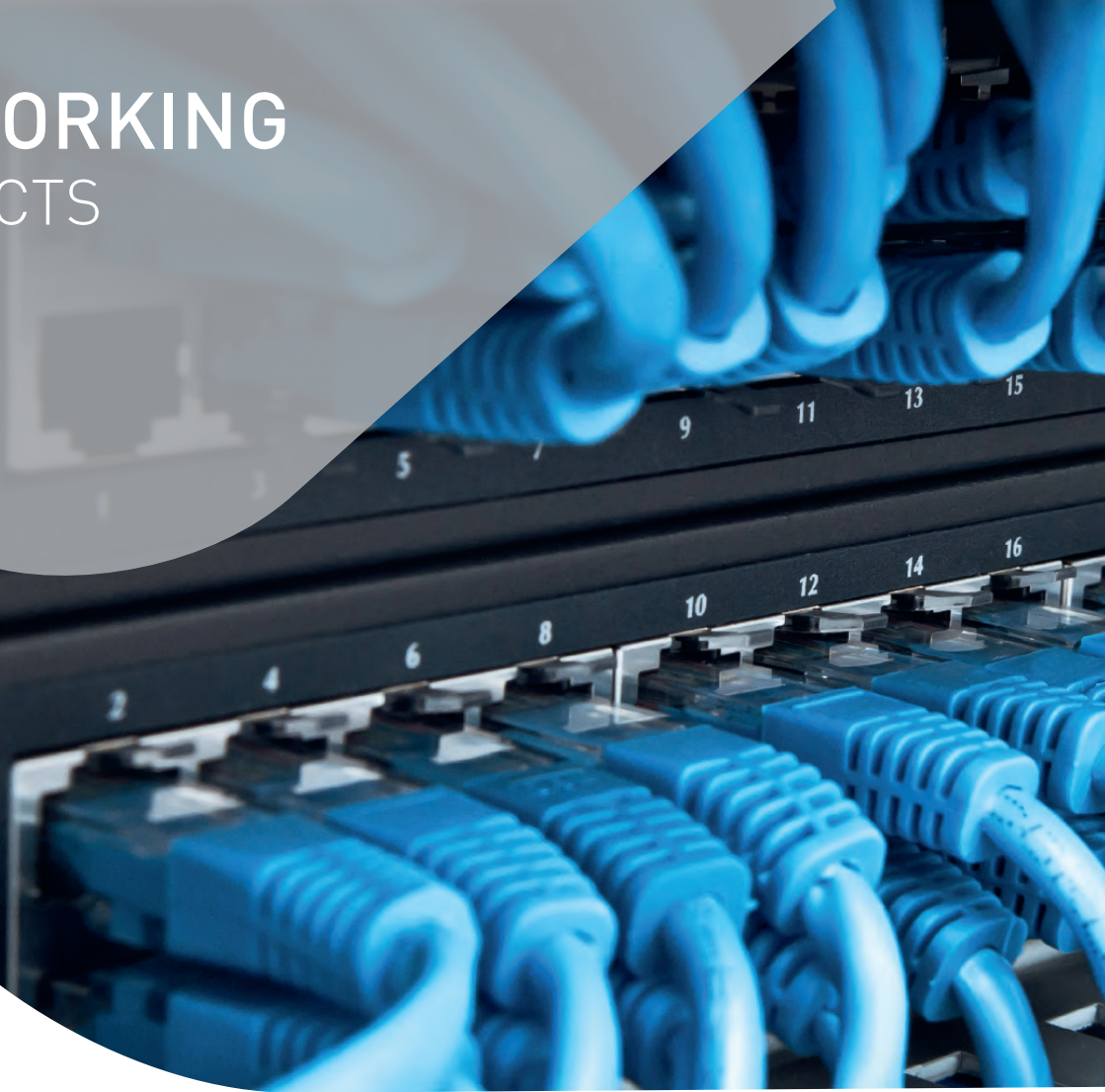
* Considering 10 video triggers for a duration of 10 seconds each.

** Given as an indication, may vary depending on the environment of use and constraints on site that can alter the Wi-Fi signal.

***Continuous recording is possible only if the battery is connected to an AC outlet.



NETWORKING PRODUCTS



- 32 8- 24 PORT SWITCHES
- 32 Wi-Fi ACCESS POINTS
- 34 10/100 & 10/100/1000 MEDIA CONVERTERS

www.gigamedia.net



GIGAMEDIA
SMART BUILDING SOLUTIONS



SMART MANAGED L2 SWITCHES

8- 24-PORT GIGABIT + 2 SFP PORT



- Full range from 8 to 48 non-blocking ports
- Compatible 802.3af (15.4W) and 802.3at (30W) for PoE models only
- Spanning Tree Protocol 802.1d, 802.1w and 802.1s
- VLAN 802.1q, VLAN entries up to 4K
- LACP 802.3ad dynamic and static trunk
- QoS 802.1p WRR and Strict priority, up to 8 Priority Queues
- Full security features set : ACL, RADIUS 802.1x, TACACS+, Loopback protection ...
- Management SNMP (v1, v2c and v3), WEB UI, Telnet and SSH
- Full Cisco-Like CLI
- EN61000-4-5 certification : 6KV RJ45 port Surge Protection

ITEM CODE	PART NUMBER	DESCRIPTION
3851000	GGM GS2008P2SKE	Smart Managed L2 Switch 8-port Gigabit PoE + 2 SFP port PoE Budget 135W
3851001	GGM GS20024P2SKE	Smart Managed L2 Switch 24-port Gigabit PoE + 2 SFP port PoE Budget 370 W
3851005	GGM GS20024G2SKE	Smart Managed L2 Switch 24-port Gigabit + 2 SFP port

SFP MODULES

- Duplex LC connector
- Full duplex operation
- 802.3x flow control support
- Power support: 3.3 V
- RoHS Compliant
- Hot pluggable
- Metal enclosure for lower EM



1000BASE-SX - MMF - LC CONNECTOR - 550M

- SFP-SX-1250 Mbps, Multimode, 850 nm, 550 m = 8.5 dB, 3.3 / 5 V, LC
- 1000Base-SX

ITEM CODE	PART NUMBER	DESCRIPTION
3853068	GGM MSFPSX	1000BASE-SX SFP Module, MMF, LC connector, 550M



1000BASE-LX - SMF - LC CONNECTOR - 10KM

- SFP-LX-1250 Mbps, Singlemode, 1310 nm, 10 km = 10.5 dB, 3.3 / 5 V, LC
- 1000Base-LX

ITEM CODE	PART NUMBER	DESCRIPTION
3853069	GGM MSFPLX	1000BASE-LX SFP Module, SMF, LC connector, 10KM

DUAL BAND WIRELESS

UNIFIED PoE ACCESS POINT

- Wireless 802.11 ac/b/g/n
- GGM WAPCD2**
 - 1 RJ45 LAN port 10/100BaseT
 - 1 RJ45 WAN/PoE port 10/100BaseT
- GGM WAPCD3**
 - 1 RJ45 LAN port 10/100/1000BaseT
 - 1 RJ45 WAN/PoE port 10/100/1000BaseT



ITEM CODE	PART NUMBER	DESCRIPTION
-	GGM WAPCD2	Dual Band Wireless Unified PoE Access Point 750 Mbps
3851007	GGM WAPCD3	Dual Band Wireless Unified PoE+ Access Point 1200 Mbps



TECHNICAL SUPPORT

Technical self-service portal GIGAMEDIA

<https://support.gigamedia.net>



8-PORT 10/100 POE SWITCH (110W)

- Comply to IEEE802.3, IEEE802.3u, & IEEE802.3af
- 10/100 Mbps self-adaptive, down link port support PoE
- All the ports support Auto MDI/MDIX
- Each PoE port support Power up to 15.4 W (IEEE802.3af)
- Compatible with Powered device applied to IEEE802.3af
- Support IEEE802.3x Full Duplex flow control and Duplex backpressure flow control function
- Automatic MAC address learning and aging
- 1K MAC Address
- 1.6G Broadband and 96Kb forwarding memory
- High performance full load power configuration
- LED indicator monitor working status and help fault detection

ITEM CODE	PART NUMBER	DESCRIPTION
3851008	GGM NE08PKE	8-Port 10/100M PoE Switch (110W)

8-16 PORT GIGABIT POE SWITCHES



- 10/100/1000 Mbps self-adaptive port, support PoE
- All the ports support Auto MDI/MDIX
- Each PoE port support Power up to 30 W (802-3at).
- Compatible with powered device applied to PoE IEEE802.3at
- Support IEEE802.3x full duplex flow control and duplex backpressure flow control function
- Automatic MAC address learning and updating
- 4K MAC Address
- High performance full load power configuration
- LED indicator monitor working status and help fault detection
- Comply to IEEE802.3, IEEE802.3u, IEEE802.3af, IEEE802.3at
- Warranty: 2 years

ITEM CODE	PART NUMBER	DESCRIPTION
3851009	GGM GS07PKE	8-port GIGABIT, including 7 PoE port switch, budget 110 W
3851010	GGM GS16PKE	16-Ports PoE 10/100/1000 with 2 empty SFP slot, 200W

16-24 PORT 10/100 SWITCHES 19" MOUNTABLE



- Complies with IEEE802.3 10Base-T Ethernet, IEEE802.3u 100Base-TX Fast Ethernet standards
- Supports broadcast storm control and dynamic buffer area automatically allocating to realize network load balancing
- MAC address studying/renewing automatically
- Automatically examine all kinds of error frames to ensure data packing right
- Equips with internal high-performance Switch Power
- Supports Auto MDI/MDIX
- 4K MAC address studying/renewing automatically
- Fanless
- 2 years warranty

ITEM CODE	PART NUMBER	DESCRIPTION
3851011	GGM FES1602KE	16-Port switch 10/100 19" mountable
3851012	GGM FES2402KE	24-Port switch 10/100 19" mountable

16-24 PORT GIGABIT 19" MOUNTABLE



- Complies with IEEE 802.3x full-duplex and flow control
- 16 10/100/1000Mbps ports connect to the workstation
- Supports Auto MDI/MDIX
- Supports NWA auto-negotiation function, auto-detect transfer data rate, UPnP, full-duplex, and automatically chooses the best network connectivity mode
- Supports IEEE802.3x full-duplex flow control, and half-duplex backpressure flow control
- 2 years warranty

ITEM CODE	PART NUMBER	DESCRIPTION
3851013	GGM GS1600KE	16-port switch 10/100/1000 19" mountable
3853014	GGM GS2400KE	24-port switch 10/100/1000 19" mountable



10/100/1000 TO SFP MEDIA CONVERTER



- Standard Protocol: IEEE802.3 10 Base-T standard, IEEE 802.3u 100Base-TX and IEEE802.3z standard
- Built in high efficiency SRAM for packet buffer, with 1K-entry lookup table and 4-way associative hash algorithm
- Half duplex: back pressure flow control - Full duplex: IEEE802.3x flow control
- Automatic identification of MDI/MDI-X cross line
- Support jumbo packet 9K Bytes
- Both external and internal power supply are available
- Fiber connector: Choice from SC,ST,FC or LC connector for multimode and single mode
- LED display for easy monitoring of device status
- Transmission distance can reach 550M for multimode and 120KM for single mode
- Can be rack mounted in 14 slots chassis(external Power supply)
- In conformity to safety code of FCC and 15 CLASS A and CE MARK

ITEM CODE	PART NUMBER	DESCRIPTION
3851015	GGM 840SFPKE	10/100/1000 VS SFP module ethernet optical transceiver

10/100/1000 TO 1000BASE-SX (MULTIMODE) MEDIA CONVERTER



- In conformity to IEEE 802.3 10 Base-T standard. In conformity to IEEE 802.3u 100 Base-TX, IEEE802.3z, IEEE802.3ab standard
- Built in high efficiency SRAM for packet buffer, with 1K-entry lookup table and 4-way associative hash algorithm
- Half duplex: back pressure flow control
- Full duplex: IEEE802.3x flow control
- Automatic identification of MDI/MDI-X cross line
- Support jumbo packet 9K Bytes
- In conformity to safety code of FCC and 15 CLASS A and CE MARK

ITEM CODE	PART NUMBER	DESCRIPTION
3851016	GGM 843MVC2KE	10/100/1000 ethernet optical transceiver

10/100 TO 100BASE-FX MEDIA CONVERTER



- In conformity to IEEE802.3 10 Base-T, IEEE802.3u 100 Base-TX/FX
- Support 288Kb data buffer,1K MAC address
- Support Back pressure flow control for full duplex
- IEEE802.3 X and half duplex
- Support Automatic identification of MDI/MDI-X cross line
- Support max.9K bytes transmission data packet length
- Support desktop and wall mounted DIN RAIL installation via GGM 742MVC2

ITEM CODE	PART NUMBER	DESCRIPTION
3851017	GGM 742MVC2KE	10/100 To Multi-mode 100Base-FX Converter, SC

14 SLOTS (2U) 19" RACK MOUNTABLE CHASSIS



- Capacity: 14 slots available
- Power protection: protection from overvoltage, overcurrent and short circuit
- Storage temperature : -20°C~70°C
- Operating temperature: 0~50°C
- Relative Humidity: 5%~95%
- Dimensions: 485 (wide) × 245 (length) × 90 (high) mm
- Power: Input: 110~220V 50-60Hz Output: DC +5V 12A

ITEM CODE	PART NUMBER	DESCRIPTION
-	GGM 714	14 Slots (2U) Rackmountable chassis 19"

Enjoy an optimized experience,
and find out more
about **GIGAMEDIA** solutions
and services online.



INTERACTIVE CATALOG

Get a quick and easy access to
GIGAMEDIA's full range of products.



TAILOR-MADE SERVICES

Pre-terminated copper and fibre
cable assemblies, pre-equipped
racks, labelling and identification,
kitting and much more



TECHNICAL RESSOURCES

Selection guides, datasheets, videos,
manuals, FAQs, tutorials and so on
to make it easier for you to get to grips
with our products



STAY TUNED!

Subscribe to our newsletter
and get the latest **GIGAMEDIA**
product information
gigamedia.net/actualites.php

GIGAMEDIA IN THE DIGITAL AGE

www.gigamedia.net



KELLIHERS ELECTRICAL BALLYMOUNT

M50 Business Park,
Ballymount Road Upper,
Dublin 12
01 4566717

KELLIHERS ELECTRICAL SANDYFORD

Unit E3, 3 Rock Road,
Sandyford Industrial Estate,
Dublin 18
01 2952011

KELLIHERS ELECTRICAL CROKE PARK

Unit G2 Croke Park Industrial Estate,
Russell Street,
Dublin 1
01 8554704

KELLIHERS ELECTRICAL FINGLAS

Unit 27 North Park,
North Road, Dublin 11
01 804 1160

KELLIHERS ELECTRICAL NAAS

Unit A1, Toughers Industrial Estate,
Newhall, Naas, Kildare
045 447860

KELLIHERS ELECTRICAL PORTLAOISE

Clonminam Industrial Estate,
Portlaoise, Laois
057 8664660

KELLIHERS ELECTRICAL BRAY

Unit A3, Oldcourt Industrial Estate,
01 2042670

KELLIHERS ELECTRICAL DUNDALK

Ard Easmuinn Road,
Dundalk, Louth
042 9327854

KELLIHERS ELECTRICAL KILKENNY

Unit 11A Loughboy Industrial Estate,
Kilkenny
056 7750410

KELLIHERS ELECTRICAL WATERFORD

Tramore Road,
Waterford
051 377755

KELLIHERS ELECTRICAL CORK - TRAMORE ROAD

Tramore Road,
Cork
021 4704100

KELLIHERS ELECTRICAL CORK - EASTGATE

Units 31-32 East Gate Drive, Eastgate,
Little Island,
Cork
021 4296240

KELLIHERS ELECTRICAL CORK - MALLOW ROAD

North Point Business Park,
Mallow Road,
Cork
021 4932300

KELLIHERS ELECTRICAL TRALEE

Ballmullen, Tralee,
Kerry
066 7145300

KELLIHERS ELECTRICAL KILLARNEY

Ross Road, Killarney,
Kerry
064 6633985

KELLIHERS ELECTRICAL LIMERICK

Dock Road,
Limerick
061 417442

KELLIHERS ELECTRICAL ENNIS

Unit 9 Quinn Road Business Park,
Ennis, Clare
065 6844233

CT ELECTRIC GALWAY

Sean Mulvoy Road, Galway
091 745300

CT ELECTRIC CASTLEBAR

Castlebar Industrial Estate, Castlebar,
Mayo
094 9023650

CT ELECTRIC BALLINA

Unit 7 Moyvalley Business Park,
Ballina, Mayo
096 60420

CT ELECTRIC SLIGO

Finisklin Industrial Estate,
Sligo
071 9145068

CT ELECTRIC ATHLONE

Unit 3 Daneswell Business Park,
Monksland,
Athlone
090 6494681

KELLIHERS ELECTRICAL CELBRIDGE

Unit G2, M4 Business Park
Celbridge
Co. Kildare
01 6544260

For more information contact:

DAVID THOMAS

✉ david.thomas@rexel.ie
☎ 087 960 1204